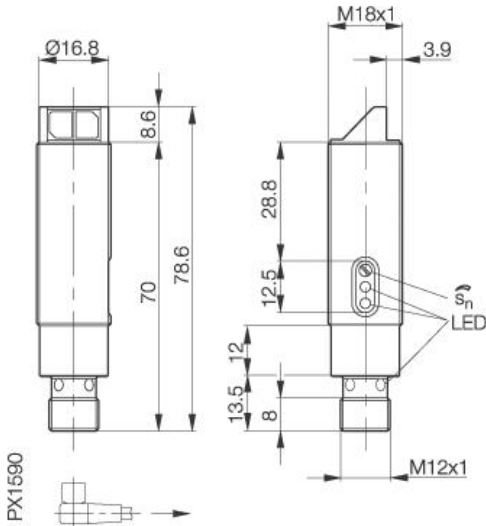


Photoelectric Sensor
BOS 18MR-PS-1HA-E5-C-S4
Sn=120mm
Diffuse, Background suppression



Common Data

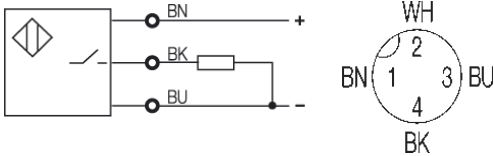
| | |
|-------------------------------------|---------------------------------|
| Series | 18MR |
| Sensortype | Diffuse, Background suppression |
| Switching frequency | 500 Hz |
| Rated operating distance Sn in mm | 120 |
| asured operating distance Sa | adjustable |
| Repeat accuracy | < 5% from Sn |
| Hysteresis | < 10% |
| Indication Switching element on | yes |
| Indication Special funktion | Stability-indication |
| Ambient temperature | -25...+55°C |
| On-delay | < 1ms |
| Light | Red light |
| Sensitivity Adjustment | Poti |
| Blind zone / min Reflector distance | 10 mm |
| Permissable ambient light | 10000 Lux |
| Output function | light-on |

Mechanical Data

| | |
|--------------------------|---------------------------------|
| Measurements | M18x78,6 |
| Shock | Halfsinus, 30gn, 11ms |
| Vibration | 10...55Hz, 1,5mm Amplitude 3x2h |
| Housing material | nickel plated brass |
| Material of sensing face | Glass |
| Degree of protection | IP67 |
| Connection | Connector S4 (M12) |
| Weigth | 57g |
| Recommended connector | BKS-S20-3 |

Electrical Data

| | |
|-------------------------------------|---------------|
| Current | DC |
| Switching function | normally-open |
| Output | PNP |
| Rated operational voltage Ue | 24V |
| Rated operational current Ie | 200mA |
| Supply Voltage | 10...36V DC |
| Ripple | < 20% from UB |
| Frequency of Supply Voltage | DC |
| No-load supply current | <20mA |
| Voltage drop | <2V |
| Short protection | yes |
| Protected against polarity reversal | yes |



Utilization categories
 Insulation class

DC13

Datasheet number:

Definitions see general catalog.
 If not otherwise noted, ratings according to
 IEC 60947-5-2 (DIN EN60947-5-2)

Balluff GmbH
 Schurwaldstrasse 9
 73765 Neuhausen a.d.F.
 Phone (07158) 173-0 Fax (07158) 5010

Datenblatt by CD-ROM - 04/2007

